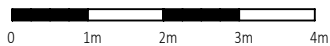
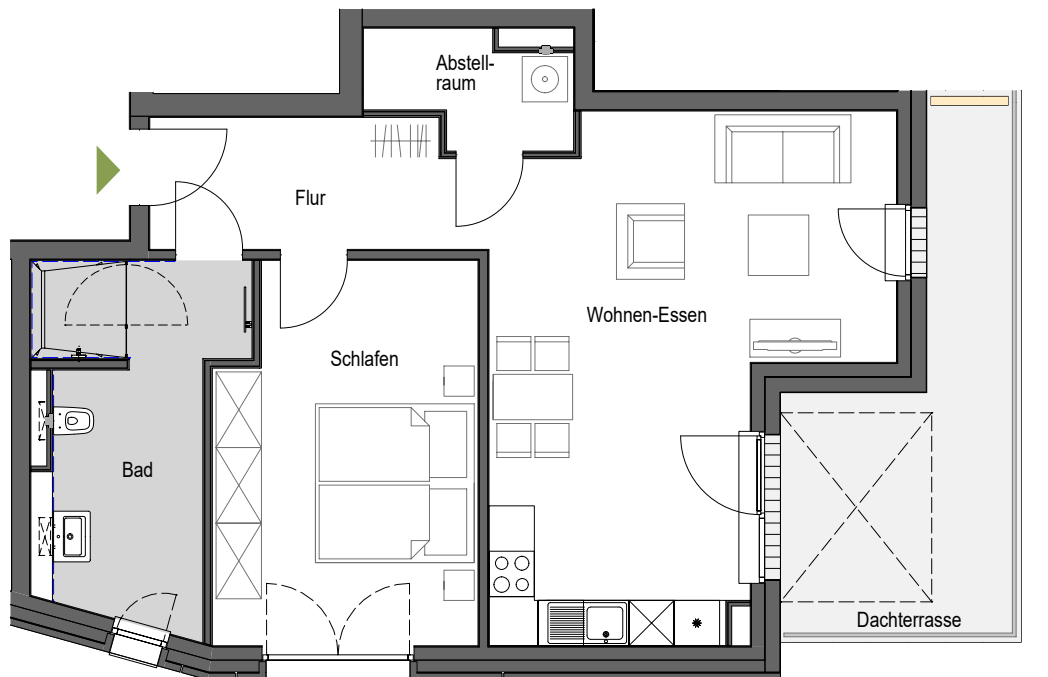
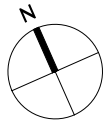


Haus am Korügen in Heikendorf



Staffelgeschoss | WHG 3.2 | ca. 76,63m²



2-Zimmer-Wohnung

Wohnen - Essen	ca. 29,92 m ²
Schlafen	ca. 16,98 m ²
Bad	ca. 11,06 m ²
Flur	ca. 7,44 m ²
Abst.	ca. 3,57 m ²
Dachterrasse	ca. 7,66 m ² (50%)

Gesamtfläche ca. 76,63 m²

