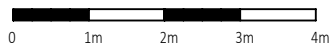
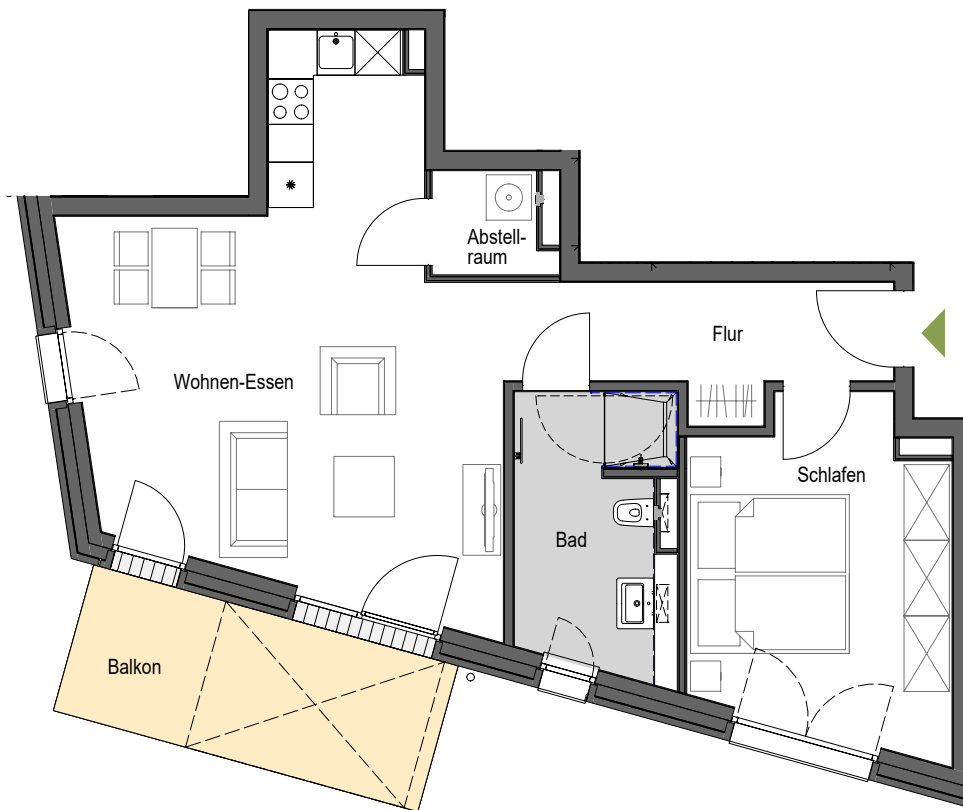
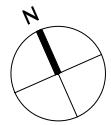


# Haus am Korügen in Heikendorf



2. Obergeschoss | WHG 2.3 | ca. 67,46m<sup>2</sup>



## 2-Zimmer-Wohnung

Wohnen - Essen	ca. 31,39 m <sup>2</sup>
Schlafen	ca. 14,32 m <sup>2</sup>
Bad	ca. 7,44 m <sup>2</sup>
Flur	ca. 7,31 m <sup>2</sup>
Abst.	ca. 2,00 m <sup>2</sup>
Balkon	ca. 5,00 m <sup>2</sup> (50%)

Gesamtfläche ca. 67,46 m<sup>2</sup>

