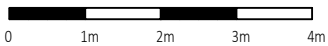
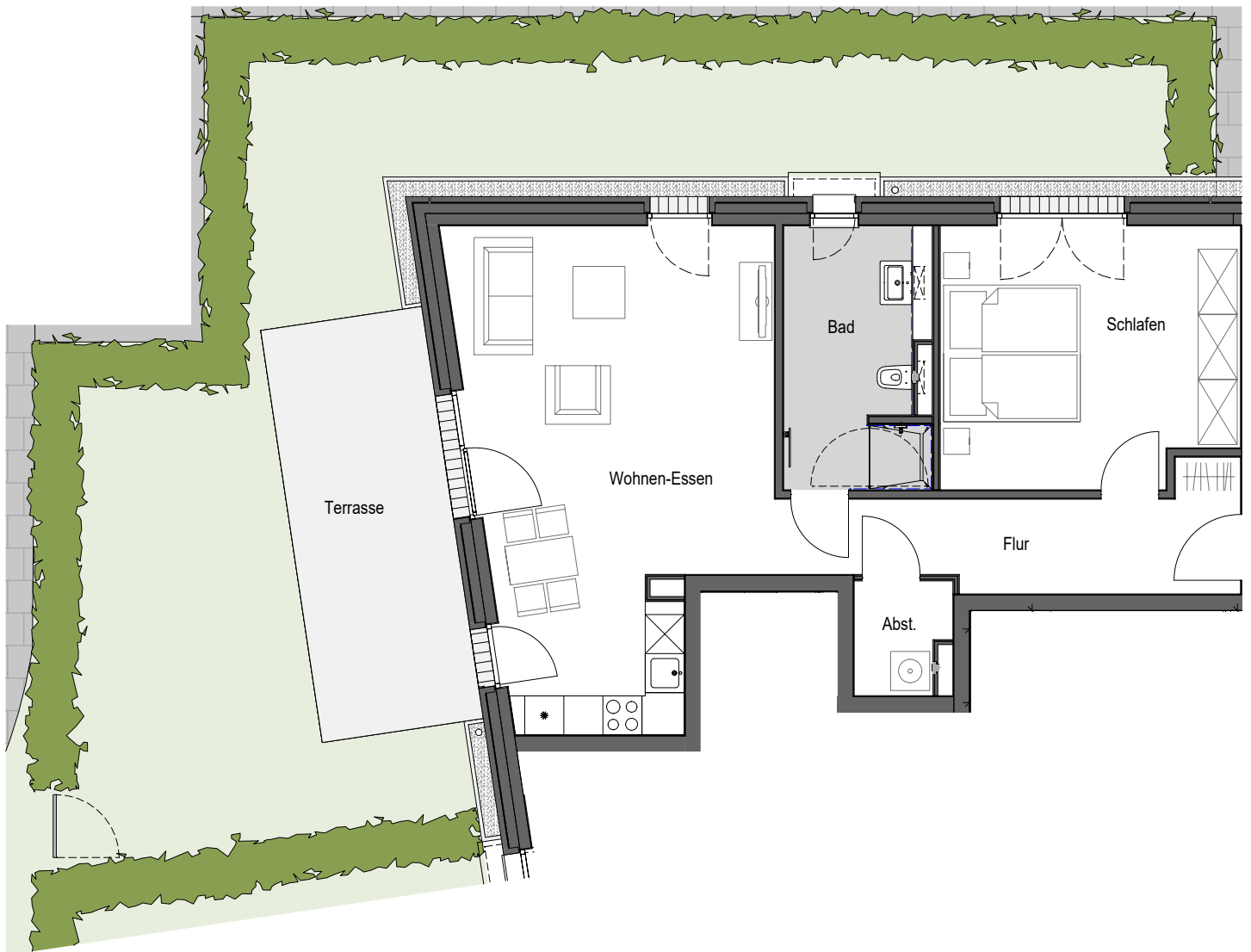
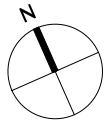


Haus am Korügen in Heikendorf



Erdgeschoss | WHG 0.4 | ca. 79,34m²



2-Zimmer-Wohnung

Wohnen - Essen	ca. 32,01 m ²
Schlafen	ca. 17,96 m ²
Bad	ca. 8,75 m ²
Flur	ca. 10,21 m ²
Abst.	ca. 2,41 m ²
Terrasse	ca. 8,00 m ² (50%)
<hr/>	
Gesamtfläche	ca. 79,34 m ²

